



ISSUED FOR: _____ DATE: 03/22/08
 PERMIT: _____

OAKLAND UNIVERSITY NURSING SCHOOL

RIVERVIEW CAMPUS
 DETROIT MICHIGAN

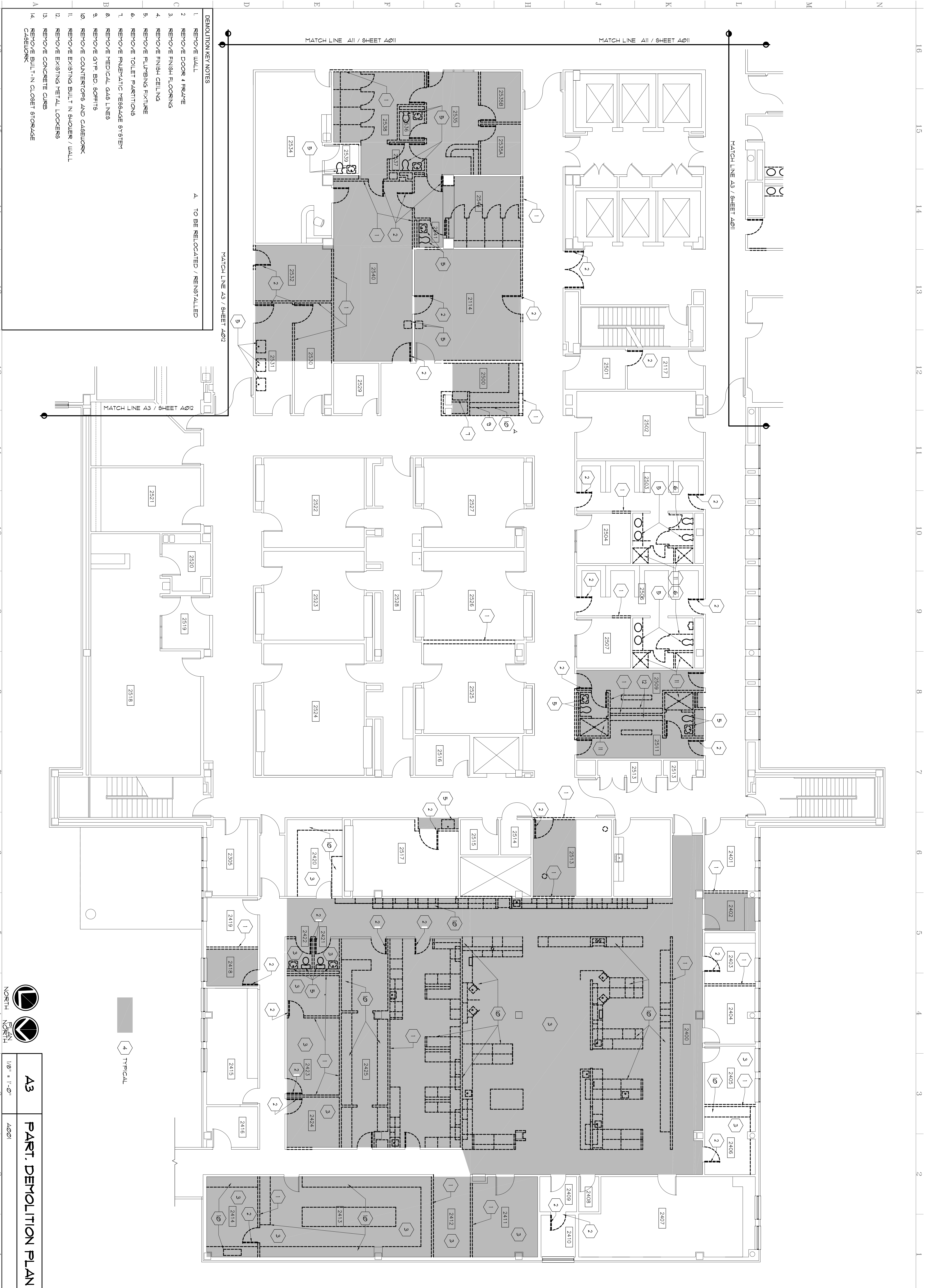
THIS DRAWING AND DESIGN ARE THE PROPERTY OF PAUL FRITZ ASSOCIATES, INC. AND ARE TO BE USED ONLY FOR THE PROJECT AND SITE SPECIFICALLY IDENTIFIED HEREIN. NO PART OF THIS DRAWING OR DESIGN IS TO BE REPRODUCED OR TRANSMITTED IN ANY FORM OR BY ANY MEANS, ELECTRONIC OR MECHANICAL, INCLUDING PHOTOCOPYING, RECORDING, OR BY ANY INFORMATION STORAGE AND RETRIEVAL SYSTEM, WITHOUT THE WRITTEN PERMISSION OF PAUL FRITZ ASSOCIATES, INC. ALL RIGHTS ARE HEREBY SPECIFICALLY RESERVED.

© COPYRIGHT © 2008
 PAUL FRITZ ASSOCIATES, INC.
 ARCHITECTS AND PLANNING
 3000 W. GRAND AVENUE
 SAINT CLAIR SHORES, MICHIGAN 48080

DRAWN BY: RBF
 CHECKED: _____
 APPROVED: _____
 STATE OF MICHIGAN LICENSE 30743
 EXPIRES OCTOBER 31, 2008

DO NOT SCALE DRAWINGS
 SHEET NAME: PARTIAL DEMOLITION PLAN
 SHEET NUMBER: A010

PROJECT NUMBER: 080102



- DEMOLITION KEY NOTES**
1. REMOVE WALL
 2. REMOVE DOOR & FRAME
 3. REMOVE FINISH FLOORING
 4. REMOVE FINISH CEILING
 5. REMOVE PLUMBING FIXTURE
 6. REMOVE TOILET PARTITIONS
 7. REMOVE PNEUMATIC MESSAGE SYSTEM
 8. REMOVE MEDICAL GAS LINES
 9. REMOVE GYP. BD. SCOFFS
 10. REMOVE COUNTERTOPS AND CABINETRY
 11. REMOVE EXISTING BUILT IN SHOWER / WALL
 12. REMOVE EXISTING METAL LOCKERS
 13. REMOVE CONCRETE CLERE
 14. REMOVE BUILT-IN CLOSET STORAGE CABINETRY
- A. TO BE RELOCATED / REINSTALLED**

16 15 14 13 12 11 10 9 8 7 6 5 4 3 2 1

A B C D E F G H I J K L M N